



MULTI-CROP USE

Fortress+

Fortress Plus combines the bioactive foundation of Fortress with added potassium and key micronutrients (boron, manganese, zinc). It is formulated to support crop stress recovery, flowering success, and to drive pod fill and grain weight during reproductive stages.

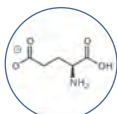
KEY BENEFITS

- Builds on the flower retention and stress-mitigation benefits of Fortress
- Added potassium supports carbohydrate movement, pod/seed fill, and kernel weight
- Enriched with boron, manganese, and zinc to strengthen reproductive success and improve nutrient use efficiency

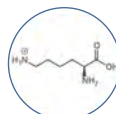
IMPACT ON THE PLANT

- Enhances translocation of sugars and starches
- Supports strong pod fill and kernel weight
- Improves grain quality and consistency

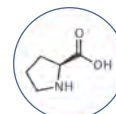
KEY AMINO ACIDS



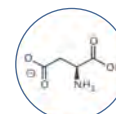
Glutamic Acid
Chelates Micronutrients



Lysine
Heat Stress Tolerance



Proline
Drought Stress



Aspartic Acid
Cold & Salt Stress



APPLICATION

Can be applied throughout the crop lifecycle. For best results, target 32 oz/acre applications when potassium demand is highest

Corn

VT-R1 (tasseling to silking) through grain fill

Soybeans

R1-R3 (flowering to early pod set)

Wheat/Small Grains

Flag leaf through early grain fill

PACKAGING

- 2.5 gal



605-860-8534

@YIELDMASTERSOLUTIONS.COM

FOLLOW US ON

